



2022 GUILFORD DIALOGUES

June 7-10, 2022

Guilford College Campus, Greensboro, N.C.

GUILFORD
COLLEGE

GUILFORD DIALOGUES

www.guilford.edu/GuilfordDialogues



2022 GUILFORD DIALOGUES

June 7-10, 2022

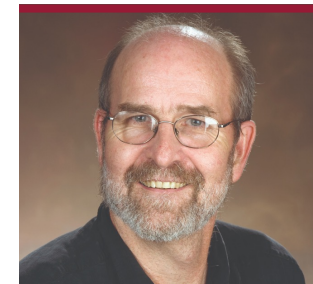
Guilford College Campus, Greensboro, N.C.

www.guilford.edu/GuilfordDialogues



Josie Williams '16, Executive Director, Greensboro Housing Coalition.

Josie Williams, '16 is the Executive Director for the Greensboro Housing Coalition (GHC), a leading housing advocacy nonprofit in Greensboro, NC. Josie promotes and advocates for safe, healthy, and affordable housing development, policy, and process that promotes racial and health equity within our communities. Her lived experience with housing insecurity grants her a unique perspective which allows her to function as a connector and interpreter for the many individuals and organizations seeking both equitable process and outcomes.



Bob Williams, Professor of Economics, Guilford College

Bob Williams has taught economics at Guilford College for 35 years. Throughout that time, he's encouraged his students to consider policies and practices that would make our economy work better for more people. In recent years, he's examined how household wealth, both within and across generations, takes on overarching role in whether people experience economic well-being. In both articles and a recent book, *The Privileges of Wealth: Rising Inequality and the Growing Racial Divide* (2017), he's documented the rising concentration of household wealth and its consequences. Currently, he's writing a new book which demonstrates how our current Federal tax policies are widening the already large, racial wealth gap.



Chris Wheat, Co-President, J.P. Morgan Chase Institute.

Chris Wheat is the co-president of JP Morgan Chase institute at JP Morgan Chase, directing research around economic equity, personal finances, taxation, savings, and trends in wealth. He will be sharing his broad and deep understanding of that data as it relates to the many challenges we face in economic equity during a beginning session on financial policy, data, and the challenges of economic equity.



Maria Zamora, Assistant Director for Undocumented Student Services at Rutgers University-Newark.

Maria J. Zamora serves as the Assistant Director for Undocumented Student Services at Rutgers University-Newark. Prior, Zamora served as a Coordinator for Undocumented Student Services (USS) and the Office of Student Life and Leadership (OSLL) at Rutgers University-Newark. During her time at Rutgers-Newark, Maria has worked to empower undocumented students by coordinating community-building programs, facilitating educational trainings and sharing her personal narrative of being a first-generation college student and an immigrant. She is also a Newman Fellow and a Latinx Undocu-Professional committed to support undocumented students navigate college.



Lamar Thorpe, Mayor of the City of Antioch, California.

Mayor Lamar Thorpe is a proud resident and 41st Mayor of the City of Antioch, one of California’s oldest cities. Once a sleepy town of the California Delta, today, Antioch is one the fastest growing cities in Northern California and the most racially diverse in the San Francisco Bay Area. He previously served on the Antioch City Council where he served as Mayor Pro-Tem between 2016 and 2018. Thorpe is the second African American to be elected mayor. He is a veteran of the United States Navy and a graduate of The George Washington University. In 2020, Thorpe was elected mayor with the largest number of votes in the City’s 150-year-old history. In less than one year, Mayor Thorpe passed the largest, bipartisan police reform legislative package in the city’s history focusing on accountability and transparency. At the height of national anti-AAPI hate crimes, Mayor Thorpe led Antioch to confront its historical legacy of racism towards the Chinese community. In May of 2021, Antioch became the first city to issue a formal apology for its anti-Chinese policies and the mob-led destruction of its Chinatown in 1876.



Marcus Thomas, Program Officer, Community Foundation of Greater Greensboro.

Marcus Thomas is a native of Spartanburg, South Carolina. He currently serves as Program Officer for Community Impact at the Community Foundation of Greater Greensboro. In his role, Marcus manages the Foundation’s grant portfolio of activities in various fields of community impact such as housing, education, and workforce initiatives. Additionally, Marcus gives oversight and leadership to the foundation’s Teen Grantmaking Council and the Building Stronger Neighborhoods program. With education being a strong foundation for Marcus’ success, he is a graduate of North Georgia University where he studied Business Administration, concentrating in Finance. Marcus is currently enrolled as a graduate student at The University of North Carolina at Greensboro. In the Spring of 2024, Marcus will graduate with a Master’s in Public Affairs. Marcus’ desire is to make Greensboro a better place for his wife, Vakaya, their daughter, Hannah Grace, and all residents and visitors.



Roodline Volcy, Director of Peer Advancement, Seed Commons.

Roodline Volcy, is Director of Peer Advancement at Seed Commons where she leads onboarding and development of new and existing peer member loan funds. She also designs systems for sustainable organizational growth rooted in equity. Roodline is the former Events and Trainings Manager and an instructor in the School for Democratic Management at Democracy at Work Institute. She led trainings both domestically and internationally in cooperative development and democratic management for worker owners, coop developers, and allies in the field. She is the former Board Chair of the Renaissance Community Cooperative in Greensboro and a current Board member of the North Carolina Employee Ownership Center.

kyle`s Letter

EVENT CO-SPONSOR

GUILFORD
COLLEGE

CENTER for PRINCIPLED
PROBLEM SOLVING and
EXCELLENCE in TEACHING

PLATINUM SPONSORS

GUILFORD
COLLEGE

BRYAN SERIES



GOLD SPONSOR

TRUIST 

SILVER SPONSOR



SPARTAN
PLANNING

BRONZE SPONSOR



COMMUNITY
FOUNDATION
OF GREATER
GREENSBORO

WELCOME DINNER PARTNER



United Way
of Greater Greensboro



Marnie Thompson, Senior Fellow, Seed Commons.

Marnie Thompson Marnie supports the growth of Seed Commons as a fundraiser on the Investment and Grant Teams and by co-anchoring the Peer Member Development Team, which provides wrap-around support to Seed Commons’ loan funds, as they grow their capacity to bring non-extractive finance to their communities. Over the last three years Marnie has played a leading role in Seed Commons expansion by quadrupling the number of fund investors and adding more than \$25 million in new investment. With Roodline Volcy, she co-led the development of a new rubric-based approach to assisting member loan funds to develop their lending capacity, which is key to Seed Commons deployment of capital to build economic self-determination in low income Black and Brown communities. Prior to working at Seed Commons, Marnie was co-founder and co-Managing Director of the Fund for Democratic Communities (F4DC), a private operating foundation in Greensboro, North Carolina. Her portfolio at F4DC included organizing funders to support Seed Commons and strengthening the Southern Reparations Loan Funds, which have now joined Seed Commons as a regional network. Formerly, Marnie was Senior Research Scientist and Director of Teacher Professional Development Research at Educational Testing Service.



Colleen Thouez, Senior Fellow, The Zolberg Institute at The New School.

Colleen Thouez is senior fellow at the New School’s Zolberg Institute, where she directs the Global Cities portfolio. She is also senior visiting fellow at SciencesPo Paris where she advises French cities, and the Africa-Europe Mayors Dialogue on Growth and Solidarity. As the inaugural director of the Welcoming and Inclusive Cities Division at the Open Society Foundations (OSF), she conceived the Mayors Migration Council (MMC) and its Global Cities Fund (2019), the Africa-Europe Mayors Dialogue (2020), and the University Alliance for Refugees and At-Risk Migrants (2018). In 2021, she was appointed by the National Association of (University) System Heads, to assist in securing housing and sponsorship for recently arrived Afghan families on university campuses across the US. Dr. Thouez previously served for 17 years at the United Nations in leadership positions in the dual fields of adult education and international migration. She continues to advise national governments, municipal governments, regional bodies, and UNHCR, IOM, the World Bank, amongst others. Her most recent publications are “New power configurations: city mobilization and policy change” (2022) in Global Networks; and “Cities as emergent international actors in the field of migration” (2020), Global Governance: A Review of Multilateralism and International Organizations. She is Canadian and French, and the mother of three.



Sonalini Sapra, Interim Associate Director in the Institute for Community and Economic Engagement at University of North Carolina Greensboro.

Sonalini Sapra is currently Interim Associate Director in the Institute for Community and Economic Engagement at University of North Carolina Greensboro. She received her Ph.D. in Political Science from Vanderbilt University and has previously taught at Kenyon College, Saint Mary's College, Saint Martin's University, and Guilford College. Before returning to graduate school, she worked at a non-governmental labor rights organization in New Delhi doing research and advocacy on the impact that trade liberalization was having on India's informal workers. She has also worked with several community organizations in the United States and currently serves as an advisory board member and research fellow at the Center for New North Carolinians (CNNC). Her teaching and research interests are in Community Engagement, Transnational Feminisms, Environmental Justice, Forced Migration, Dalit Studies, and the Scholarship of Teaching and Learning. In her spare time, she enjoys exploring Greensboro, cooking, and being a parent to her wonderfully wild and stubborn 6-year old daughter.



Mac Sims, President and Chief Executive Officer, EAST Greensboro NOW

Mac Sims, President since inception in 1997, Sims has experience working as a consultant/developer for community development corporations in Wilmington, NC and Washington, NC, regarding single-family housing development and construction, as well as tax credit experience for multi-family housing developments. Prior to EGN, Sims worked for Weaver Cooke Construction Company, LLC, serving in a variety of roles that included: commercial and residential real estate development, commercial and multi-family real estate management, business development manager and marketing manager for construction. He serves on a number of local advisory boards and boards of directors including Salvation Army, the YMCA, and Wellspring Retirement Community. He is a graduate of North Carolina A&T State University.



Hourie Tafekh, Program Manager, University Alliance for Refugees and At-Risk Migrants

Hourie Tafekh earned her PhD in Global Affairs from Rutgers University Newark. Hourie's dissertation examines the factors that impact the entrepreneurial activities of refugees in U.S. cities. Before arriving in the US, she lived in Malta for a few years, where she co-founded Spark15, the first refugee-led organization recognized by the United Nations Higher Commissioner for Refugees (UNHCR). As a president of Spark15, she advocated for the rights of refugee youth in Malta before the Office of the President of Malta, The Minister for European Affairs and Inclusion, The Ministry of Education, and UNHCR-Malta. Hourie was selected as one of 40 young leaders to represent young refugees in the annual meeting of the United Nations Higher Refugee Commissioner in 2016 in Geneva. In 2020, Hourie was one of six women from the U.S. and Canada awarded a prestigious Margaret McNamara Education Grant (MMEG). In 2021, she was also awarded an international fellowship from American Association of University Women (AAUW). After arriving in the U.S., she assisted in developing and implementing the University Alliance for Refugees and At-Risk Migrants (UARRM) initiative and its student division 'Student Voices for refugees'. Hourie is always eager to represent the voice of refugees and underrepresented groups, particularly women, access to higher education and entrepreneurial activities.

GUILFORD
COLLEGE

GUILFORD DIALOGUES

JUNE 7-10, 2022

DAY 1: TUESDAY, JUNE 7, 2022

- 9 – 11 a.m.

Pre-Forum Activities - Comparative Urbanization

This session, which will be conducted as a pre-forum event, will provide an opportunity for researchers and practitioners to examine comparative issues of urbanization. This session is funded with the support of the United States Embassy in South Africa.

Tim Raphael, Professor of Arts and founding Director of the Center for Migration and the Global City
Lorna Johnson, Principal, Global Linkages Inc.
Dr Carin Combrinck, coordinator and lecturer in the Honours programme, Department of Architecture at the University of Pretoria
Martina Jordaan, Head of Community Engagement Research and Postgraduate Studies at the Mamelodi Campus at the University of Pretoria
- 4 – 5:30 p.m.

Registration (where?)
- 5:30 – 6:30 p.m.

Pre-Forum Reception (where?)
- 6:30 – 8 p.m.

Dinner (Co-Sponsored by United Way of Greater Greensboro)
[Place:](#)

DAY 2: WEDNESDAY, JUNE 8, 2022

- 7:30 - 8:30 a.m.

Breakfast (Where)
- 8:30 – 9 a.m.

Opening Thoughts (where?)

This session will provide a welcome and overview of the Guilford Dialogues.

Kyle Farmbry, President, Guilford College
Amanda Szabo-Huff, Coordinator of Ethical Leadership and Coordinator - Guilford Dialogues, Guilford College
- 9 - 10:15 a.m.

Mapping the Challenges of Economic Inclusion

This opening panel will provide an opportunity for specialists working in areas of economic inclusion to provide an overview of some of the current challenges to building inclusive economies.

Chris Wheat, Co-President, J.P. Morgan Chase Institute.
Bob Williams, Professor of Economics, Guilford College
Taiwo Jaiyeoba, Manager, City of Greensboro
Moderated by: **Natalya Shelkova**, Associate Professor of Economics & Coordinator, Guilford College
- 10:15-10:30 a.m.

Break

10:30 -11:50 a.m.

Race, Ethnicity, Gender, and Economic Inclusion

This panel will explore intersections of race, ethnicity, gender, and economic inclusion.

Regina Malveaux, Executive Director, Washington State Women’s Commission

Marcus Bass, Deputy Director of the North Carolina Black Alliance and Executive Director of Advance Carolina

Sarah Glover ’88, Manager, Family Success Centers, United Way of Greater Greensboro

Lamar Thorpe, Mayor of the City of Antioch, California.

Moderated by: **Regina Malveaux**, Executive Director, Washington State Women’s Commission

12-1:30p.m.

Lunch (Where?)

1:45-3 p.m.

Strategies for Refugee and Migrant Economic Inclusion

This panel will explore strategies for including migrant communities – including refugees, undocumented individuals, and others in economies. Members of this panel will explore challenges and strategies related to employment and entrepreneurial development.

Colleen Thouez, Senior Fellow, The Zolberg Institute at The New School

Esther T. Benjamin, CEO and Chief Executive Director, World Education Services

Hourie Tafech, Program Manager – University Alliance for Refugees and at-Risk Migrants

Maria J. Zamora, Program Manager, Undocumented Student Services - Rutgers University Newark

Moderated by: **Sonalini Sapra**, Interim Associate Director in the Institute for Community and Economic Engagement at University of North Carolina Greensboro

3-4:15 p.m.

Strategies for Entrepreneurial Development

This panel will explore strategies focused on entrepreneurial development as a means of enhancing economic inclusion.

Simon Gifford, Chief Executive Officer, Mashauri Limited

Russell Fugett, Founder and Chief Encouragement Officer, Jumla Network, and Co-Founder and Executive Director of Endowment Commons

Wendy Bolger, Founding Director, Loyola University Maryland, Center for Innovation and Entrepreneurship

Moderated by: **Lisa Hazlett**, Vice-President, Nussbaum Center for Entrepreneurship

4:15-4:30 p.m.

Break

4:30-5:15 p.m.

Conversations on Economic Inclusion (Where)

Speaker: **Shelly Eweka**, Senior Director, Advice Strategy, TIAA

5:15-6:30 p.m.

Reception (Sponsored by TIAA and Bryan Series)
Where?

7-8:15 p.m.

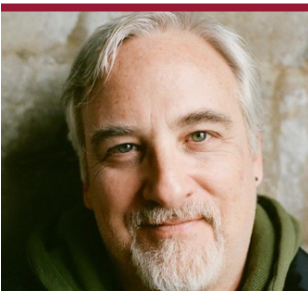
A Discussion with Eugene Robinson on Economic Inclusion

This program will provide an opportunity for a conversation with Pulitzer Prize winning *Washington Post* Columnist **Eugene Robinson** on matters of economic equity and inclusion. In conversation with **Carla Banks**, Communications and Marketing Director for City of Greensboro.



Dennis Quaintance, Chief Executive Officer, Chief Design Officer, and Chief Storytelling Officer of the Quaintance-Weaver Hotel and Restaurant Group.

Dennis Quaintance is the CEO, Chief Design Officer, and the Chief Storytelling Officer for Quaintance-Weaver hotel and restaurant group including two, four-diamond hotels and four restaurants. Additionally, he has served on multiple boards, including the Mebane Foundation, that focuses on early childhood education and Johnnetta B. Cole Global Institute for Diversity and Inclusion. In 2016, Dennis facilitated the transfer of ownership of the QW operating businesses to a trust that provides retirement benefits for QW staff members. QW is now 100% employee owned. He will share his decision process regarding labor and transferring his companies to employee ownership during a panel on enhancing employee ownership.



Tim Raphael, Professor of Arts and founding Director of the Center for Migration and the Global City.

Tim Raphael is Professor of Arts, Culture and Media at Rutgers University-Newark. He is the founding Director of the Center for Migration and the Global City, an incubator for academic research and public dialogue focused on New Jersey immigrant communities that disseminates its findings in multiple formats and media that engage a broader public. As a theater artist he has devised, directed and produced over fifty productions at venues that include The Kennedy Center, Theater For A New Audience and New York Theater Workshop. He has also written extensively about the intersection of politics, popular culture and performance for a wide variety of journals, and in *The President Electric: Ronald Reagan and the Politics of Performance*. Dr. Raphael’s current project, *Newest Americans*, is a multidisciplinary investigation of immigrant life that “publishes” its findings through multimedia storytelling. *Newest Americans* is a collaboration between Rutgers University-Newark faculty and students, VII Photo, a visual documentary collective representing two dozen of the world’s most accomplished photo-journalists, and Talking Eyes Media, an award-winning documentary media production company.



Jose Sandoval, AVP/Financial Center Manager, American National Bank and Trust company.

José A. Sandoval is a native of Michoacán, Mexico. He and his family moved to rural North Carolina in the late 80’s and to Greensboro in 2014. He has more than 14 years of experience in the banking industry and is currently the AVP/Financial Center Manager with American National Bank and Trust Company. José serves as part of the bank’s DEI Task Force and is a member of the DEI Council for the N.C. Bankers Association. He also serves on the board of the United Way of Greater Greensboro and on several committees throughout Greensboro.



Graham Macmillan, President, Visa Foundation

Graham Macmillan is a social impact leader and a champion for advancing economic opportunity and entrepreneurship through philanthropy and investment. As the president of the Visa Foundation, Graham develops and executes the Foundation’s impact investing and grant making strategy in support of its mission to help low-income and financially-underserved micro and small businesses around the world thrive and prosper. In addition, Graham oversees all of the Foundation’s activities addressing broader community needs and humanitarian response. Graham brings 25 years of experience leading purpose-driven work in the private and public sector with global institutions. Before joining the Visa Foundation, he was the Senior Program Officer for Mission Investments at the Ford Foundation. Prior to the Ford Foundation, Graham was Director of Corporate Citizen Partnerships at Citi, partnering with business units to build Citi’s reputation and contributions to economic progress. He serves as a member of the Board of Directors of Village Capital while previously serving as two-term member of the Executive Committee of the Aspen Network for Development Entrepreneurs (ANDE). He has been a Term Member of the Council on Foreign Relations. Graham received his BA from Colby College, MSc from NYU Wagner, and MBA through a joint program at NYU Stern, London School of Economics and HEC Paris School of Management.



Marvin J. Price, Executive Vice President, Economic Development, Greensboro Chamber of Commerce.

Marvin J. Price currently serves as the Executive Vice President, Economic Development for the Greensboro Chamber of Commerce -- representing Guilford County & Greensboro. As an economic development executive, Marvin has worked with corporate executives, site selectors, and real estate developers to close recent notable wins that include: Boom Super Sonic, Procter & Gamble, LT Apparel, Toyota, RPM Wood Finishes Group, Retirement Clearinghouse, Honeywell, 1-800 Contacts, Krispy Kreme, National Junior College Athletic Association Headquarters, LKQ Corporation, Boshart Industries Inc, Porta North America, and DHOLLANDIA. Previously, Marvin served as Vice President of Economic Recruitment for the Charlotte Regional Business Alliance, representing the 15-county bi-state region. Before his Charlotte role, he managed Business Development for Spire, the fifth-largest natural gas utility in the US. Marvin also served as Project Manager for the Birmingham Business Alliance, where his efforts resulted in more than \$250 million in capital investment and over 2,000 jobs. Marvin is the recipient of many industry and professional awards, including: 2021 & 2019 DCI 40 Under 40 in Economic Development, 2020 & 2018 Consultant Connect Top 50 Economic Developers Award, and the 2018 North Carolina Economic Development Association’s Emerging Executive Award. He holds a bachelor’s degree in political science from the University of Montevallo and a master’s degree in community planning from Auburn University.

DAY 3: THURSDAY, JUNE 9, 2022

7:30-8:30 a.m.	Breakfast (Where?)
8:30-9:15 a.m.	<p>Labor and Economic Inclusion</p> <p>This session will explore the role of labor movements in ensuring economic equity.</p> <p>James L. Donovan Jr., Director of the Department of Political and Legislative Action, International Brotherhood of Teamsters</p> <p>Maria Lopez Gonzalez, Policy Advocacy Manager, El Pueblo</p> <p>Moderated by: Christian Matheis, Visiting Professor of Justice and Policy Studies, Guilford College</p>
9:15-9:30 a.m.	Break
9:30-10:45 a.m.	<p>Enhancing Ownership – Employee Ownership</p> <p>This session will explore the concept of employee ownership as a strategy for enhancing economic inclusion.</p> <p>Guenevere Abernathy, Executive Director, North Carolina Center for Employee Ownership</p> <p>Dennis Quaintance, Chief Executive Officer, Chief Design Officer, and Chief Storytelling Officer of the Quaintance-Weaver Hotel and Restaurant Group</p> <p>Adriane Clomax, Ph.D. Candidate, University of Southern California’s Dworak-Peck School of Social Work, and Fellow of the Institute for the Study of Employee Ownership and Profit Sharing</p> <p>Moderated by: Adriane Clomax, Ph.D. Candidate, University of Southern California’s Dworak-Peck School of Social Work</p>
10:45 -11 a.m.	Break
11 a.m. -12:15 p.m.	<p>Capital Mobilization and Economic Inclusion</p> <p>This panel will explore the role of financial institutions in facilitating economic inclusion.</p> <p>Athan Lindsay, Vice-President for Grants and Initiatives, The Community Foundation of Greater Greensboro and Director of the Blacks in Greensboro (BIG) Equity Fund</p> <p>Wilson Lester, Co-Founder, Managing Partner, Partners in Equity, NC</p> <p>Jose Sandoval, AVP/Financial Center Manager, American National Bank and Trust company</p> <p>Marnie Thompson, Senior Fellow, Seed Commons</p> <p>Moderated by: Nancy St. Jacobs, Vice President and Multicultural Banking Leader for Truist</p>
12:15-1:45 p.m.	Lunch
1:45-3 p.m.	<p>Community Partnerships and Economic Inclusion</p> <p>This session will explore the roles of community organizations in ensuring economic inclusion.</p> <p>Joyce Johnson, Co-Executive Director, Beloved Community Center of Greensboro INC</p> <p>Mac Sims, President and Chief Executive Officer, EAST Greensboro NOW</p> <p>Dayna Carr, Founder & Director, Glenwood Together</p> <p>Marvin Price, Chamber of Commerce, Executive Vice President, Economic Development, Greensboro Chamber of Commerce</p> <p>Moderated by:</p>
3-3:15 p.m.	Break

3:15-4:30 p.m.	Housing and Economic Inclusion This panel will explore the role of housing in ensuring matters of economic inclusion. <i>Josie Williams '16</i> , Executive Director, Greensboro Housing Coalition <i>Gene Brown</i> , President and Executive Director, Community Housing Solutions <i>Marcus Thomas</i> , Program Officer for Community Impact, Community Foundation of Greater Greensboro Moderated by: <i>David Hopkins '91</i> , President and Chief Executive Officer, Urban League of Greater Hartford
4:30-4:45 p.m.	Break
4:45-6 p.m.	ESG, Impacting Investing, and Inclusion This panel will explore the roles of ESG goals and impact investing strategies in facilitating economic inclusion. <i>Byron Loflin</i> , Global Head of Board Engagement, NASDAQ <i>Graham Macmillan</i> , President, Visa Foundation <i>Roberta Lobo</i> , Director at Nuveen, a TIAA company Moderated by: <i>LaDaniel Gatling II</i> , Vice President for Advancement and Alumni Relations, Guilford College.
6-6:45 p.m.	Reception (Sponsored by Spartan Planning Group and Truist) Where?
6:45 - 7:45 p.m.	Dinner (where?)

DAY 4: FRIDAY, JUNE 10, 2022

8-9 a.m.	Breakfast (where?)
9 a.m. - 12 p.m.	Bringing Issues of Economic Inclusion to Communities (where?) This morning session will be dedicated to enabling participants to develop strategies for enhancing economic inclusion in their own communities. Participants will be divided into small groups and will brainstorm strategies that can be developed around such efforts.



Athan Lindsay, Vice-President for Grants and Initiatives, Community Foundation of Greater Greensboro, and Director of the Blacks in Greensboro (BIG) Equity Fund.

Athan Lindsay serves as Vice President of Grants and Community Impact at the Community Foundation of Greater Greensboro, where he leads the Foundation’s grantmaking programs and initiatives to have positive impacts on Greensboro. Over the years, he has proven himself to be a knowledgeable thought leader recognized for fostering an understanding and appreciation for how philanthropy can be utilized as an effective tool for building and transforming communities. Much of his work has enabled Athan to work extensively in elevating the rich giving traditions of African American/Black philanthropy and equipping African American donors with donor education and access to different charitable giving vehicles that advances their charitable giving goals and establishes their philanthropic legacies. Prior to being promoted to Vice President of Grants and Community Impact, he led donor engagement efforts to engage more donors of color. Athan is a 2000 Fellow of the Southeastern Council of Foundations Hull Leadership and the recipient of the Association of Black Foundation Executive’s (ABFE) 2006 Emerging Leader in Philanthropy Award.



Byron Loflin, Global Head of Board Advisory, Nasdaq

Byron Loflin is Global Head of Board Advisory at Nasdaq, where he leads board assessments and Boardroom Engagement services. He is the founder and former CEO of the Center for Board Excellence (CBE) – acquired by Nasdaq in 2019. Byron is recognized for developing unique products that address business dynamics, corporate culture, accountability, and performance. His experience and expertise are in the design and administration of assessments and advising board chairs, boards, committees, directors and executive management in a range of corporate governance matters. He will address Boardroom strategic alignment, best practices, board refreshment, diversity, and corporate governance planning.



Regina Malveaux, Executive Director, Washington State Women’s Commision

Regina Malveaux, J.D. is Executive Director of the Washington State Women’s Commission; she will moderate a panel on gender and race issues with economic inclusion. Her expertise of the subject matter, combined with her significant professional experience leading the YWCA, as a professor of Women’s and African American Studies, working with First Lady Hillary Clinton and Honorable Maxine Waters, makes her an ideal moderator for this panel.



Lorna Johnson, Principal, Global Linkages Inc.

She is the Principal of Global Linkages Inc., a management consulting firm, representing a cross-section of businesses, non-profits, educational institutions and businesses in developing and assisting with creating international partnerships for universities service organizations and non profits. The work of Global Linkages Inc. has partnering US based institutions with African interests including trade development, international exchanges, strategic planning, governance, fund development, volunteer development, grantsmanship, program management and development initiatives. Global Linkages Inc has a particular focus on those organizations whose work includes international and global interest. In building partnerships with a strategic interest in Africa, Global Linkages Inc. has cross-sectored relationships in government, business, education and the NGO sectors in Africa. Partnerships that have been created have provided innovative solutions to addressing poverty alleviation, gender equality, improved health services and small business development.



Nancy St. Jacobs, Vice President and Multicultural Banking Leader for Truist.

Nancy St. Jacobs is the Vice President and Multicultural Banking Leader for Truist. She has been an engaged ally and partner for financial educational outreach in the community since 1992. Through the development of partnerships with community organizations, Nancy delivers financial education curriculum to small business owners as well as to individuals and families. Her passion to empower others is demonstrated as she educates, counsels, and mentors through her partnerships with local community outreach organizations. Nancy also serves as an Advisory Board Member for organizations whose focus is to elevate and educate the financially under-resourced community and is often called upon to deliver workshops where the emphasis is to build an inclusive financial ecosystem. She is a graduate of the University of Southern Mississippi where she received a Bachelor's Degree in Business Administration, and she later studied Banking and Finance at the University of Washington in Seattle.



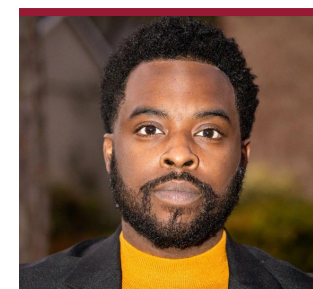
Wilson Lester, Co-Founder, Partners in Equity, NC.

Wilson Lester, Co-Founder of Partners in Equity, a national investment fund focused on supporting owner-occupied commercial real estate for BIPOC businesses owners. Wilson is accomplished leader in community finance and economic development whose efforts continue to forge access to capital and resources for BIPOC entrepreneurs. He built Piedmont Business Capital, a N.C.-based CDFI, or revolving small-business loan fund, that has delivered millions in impact capital to Black businesses across N.C. He is also a Co-Founder of the ACCESS Center for Equity and Success, which supports minority business enterprises with securing public and private contract opportunities. Wilson believes active philanthropy builds communities; therefore, he serves as Treasurer and on the Investment Committee for Cone Health Foundation, as a Board Member of the Triad Advisory Council for Truist Bank, and a Trustee of Greensboro College, and various boards that support health and economic development, and previously his work with the African American Alliance of CDFI CEOs Advocacy Committee which helps shape policy that directly scales Black businesses.

GUILFORD DIALOGUES SPEAKERS

Guenevere Abernathy, Executive Director, North Carolina Center for Employee Ownership.

Guenevere Abernathy is a values-driven business leader with expertise in social entrepreneurship, business development, strategic planning and raising capital. She was recognized by *Walter* magazine's Women Inspiring Innovation, a finalist for the BCBS Health Innovation Challenge, and her work has been covered by *Durham Magazine*, *Triangle Business Journal*, and *Our State* magazine. Her experience centers around developing and implementing new ideas. She is most interested in sustainability, food systems and supporting underrepresented communities. Examples include land conservation projects for nonprofits, launching conservation and preservation based real estate companies, founding a local food based mobile market, angel investing, advising women-led startups, and most recently joining the North Carolina Employee Ownership Center. She lives in her hometown of Durham, NC, with her husband and two children. Her interests include yoga, gardening, saltwater fun, hiking, reading and exploring the world.



Marcus Bass, Deputy Director of the North Carolina Black Alliance and Executive Director of Advance Carolina.

Marcus Bass came to Advance Carolina in 2017 after serving as Statewide Campaign Director for voting rights advocacy group Democracy North Carolina, where he led their long-term redistricting effort, coordinated millennial and faith-based voter engagement, and served as a key messenger for the organization. Marcus has spent the past decade organizing issue-based campaigns and leading citizens to harness their own power to create change.



Esther T. Benjamin, CEO and Chief Executive Director, World Education Services.

Esther Benjamin has been a global executive in the public, private, and civil society sectors for more than 25 years. She has led business partnerships, as well as education, engagement, health, and economic development programs in over 100 countries. She is currently CEO and Executive Director of World Education Services. Previously, she was CEO for Africa Operations with Laureate Education, and she served in the administrations of President Obama and President Clinton. Esther holds master's degrees in International Affairs and Applied Economics from American University, as well as a bachelor's degree in Political Science and English from North Central College. *New York Times* best-selling author Wes Moore profiled Esther as "The Globalist" in his book *The Work: Searching for a Life that Matters*.



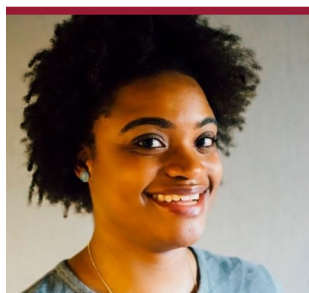
Wendy Bolger, Founding Director, Loyola University Maryland, Center for Innovation and Entrepreneurship.

Wendy Bolger is pleased to share her experience launching a new university center that activates student innovators and engages with the entrepreneurial ecosystem in the community, prioritizing founders of color and women. She is an “intrapreneur” who has led innovation at nonprofits including Share Our Strength, the National Geographic Society, and Mercy Corps, and at Intel corporation.



Gene Brown, President, and Executive Director, Community Housing Solutions.

Gene Brown is President & Executive Director of Community Housing Solutions which is a nonprofit organization that repairs homes for low-income homeowners who can't physically or financially afford these services themselves. Community Housing Solutions leverages donations from the community and their staff leads volunteer groups to complete the repair projects restoring hope and dignity for families in need in Guilford County. Prior to joining Community Housing Solutions, Gene enjoyed a 22-year career in the group health insurance industry working with UnitedHealthcare, PHP and The Travelers. Gene is active in the community through the Greensboro Airport Rotary Club, past board member for WRLP, Inc. and the Greensboro Children's Museum, past member of the Greensboro Jaycees and a graduate of Leadership North Carolina. Gene has been married to his wife Lisa for 30 years and they have 4 wonderful grown children. They moved into the Glenwood neighborhood 13 years ago and live in a 96-year-old house.



Adriane Clomax, Ph.D. Candidate, University of Southern California's Dworak-Peck School of Social Work, and Fellow of the Institute for the Study of Employee Ownership and Profit Sharing.

Adriane Clomax is a fourth-year Ph.D. candidate at the University of Southern California's Suzanne Dworak-Peck School of Social Work and a Fellow of the Institute for the Study of Employee Ownership and Profit Sharing, Rutgers University. Her research interests focus on economic outcomes for workers in democratic workplaces, specifically employee-owned businesses. She recently was named a fellow with the Institute for the Cooperative Digital Economy. She is working on a project researching the accessibility of platform worker cooperatives for marginalized workers, particularly immigrants and the formerly incarcerated, and how these types of cooperatives can provide a pathway to a stable income. Currently, she is preparing her dissertation study, which will focus on economic and health outcomes for workers of color in employee-owned businesses.



Taiwo Jaiyeoba, Manager, City of Greensboro

Taiwo Jaiyeoba officially took over as the Greensboro City Manager on February 1, 2022. Taiwo came to Greensboro from the City of Charlotte where he served in a dual capacity as Assistant City Manager and director of the Planning, Design and Development Department. He was a member of Charlotte's Executive Leadership team, providing support to the departments of Planning, Transportation and Charlotte Area Transit Services. Taiwo spearheaded efforts to address Charlotte's growth in an equitable, sustainable and livable manner. He led several transformative initiatives over the past three years, such as development of the Charlotte Future 2040 Comprehensive Plan, the Unified Development ordinance, the Transit Oriented Development ordinance, Corridors of Opportunities program, the proposed multi-million dollar Transformational Mobility Network plan – strengthening the City's ability to create more affordable housing options, while maintaining an economically competitive environment. Taiwo currently serves as a National Board member of Railvolution, an organization that envisions America's cities and regions transformed into livable places – healthy, economically vibrant, socially equitable and environmentally sustainable. Taiwo's multiple awards include American Institute of Architects 2020 Laurel Award and the UNC Charlotte Inaugural Urban Design 2020 Urbies Award. Prior to Charlotte, he served as Director of the Sacramento Regional Transit District in California, and Director of Planning and Development in Grand Rapids, MI. Taiwo earned his bachelor's degree in Geography, and his Master of Science degree in Urban and Regional Planning, from Ife University in Nigeria, as well as graduating from the MIT Sloan School of Management in Leadership.



Joyce Johnson, Co-Executive Director, Beloved Community Center of Greensboro

Joyce Hobson Johnson is the Co-Executive Director of the Beloved Community Center of Greensboro, a community organizing, leadership development, research, and advocacy entity. Joyce, her husband, and others established the pace-setting Greensboro Truth and Community Reconciliation Process and more recently the statewide North Carolina Truth, Justice and Reconciliation Commission process, modeled after the successful Greensboro process. Joyce began her community activism as a high school student and NAACP youth member in Richmond, VA during the 1960s struggle for civil rights. She deepened her involvement at Duke University, where she was founding co-chair of the Duke Afro-American Society; a leader in the movement for relevant education; and an advocate for fair wages and safe working conditions for non-academic campus employees. Johnson was also actively engaged in the Durham community with a variety of civil rights initiatives, worker justice struggles, tutoring projects, and local church activities. Joyce served as a business professor and transportation research director at North Carolina A&T State University in Greensboro for 27 years, and was instrumental in the university's designation as a national transportation center of excellence in research and training with multiple year, multiple million-dollar funding from the US Department of Transportation. Joyce has served on the Greensboro Parks and Recreation Commission, the Guilford County Health Board, the Community Foundation of Greensboro Board of Directors, the Executive Committee of the Greensboro Branch NAACP, and as a member of the National Association of Negro Business and Professional Women's Clubs.



Simon Gifford, Chief Executive Officer, Mashauri.

Simon Gifford is an adjunct professor at the prestigious IE Business School in Madrid and lectures on strategy and entrepreneurship around the world. He has a deep interest in giving university graduates an entrepreneurial mindset to unlock the massive potential for this group to make a change in the world through innovation. In this regard, he is also Chief Executive Officer of Mashauri Limited, an entrepreneurial education platform designed to support universities and other institutions in offering experiential entrepreneurial education to their students. He has been involved in the creation and growth of several other new ventures and acts as an advisor to a number of early stage companies. Prior to Mashauri, he also has more than two decades experience supporting multinationals and public sector organizations in addressing their strategic issues, through his own consulting company (Genesis); and while being a global partner at Deloitte Consulting and Braxton Associates. He has degrees in statistics, economics and marketing and an MBA from UCT.



Lisa Hazlett, Vice-President, Nussbaum Center for Entrepreneurship.

Lisa Hazlett is the Vice President of the Nussbaum Center for Entrepreneurship where she is responsible for development, day to day operations of the Center and communicating the Vision of the CEO, Sam Funchess. Prior to the Nussbaum Center, Lisa spent 7 ½ years in healthcare and almost 30 years managing her own business as a professional singer and actress. Lisa is officially sanctioned by the estate of Patsy Cline. A proud Rotarian, Lisa served as President of her club during the 2019-2020 Rotary year. Lisa was awarded the Governor's Platinum Club Award and achieved the Highest Membership Growth Award out of 50 clubs in District 7690. Lisa is a Certified StoryBrand Guide, a Marketing certification and licensure designed to deliver results for small businesses using the art of storytelling.



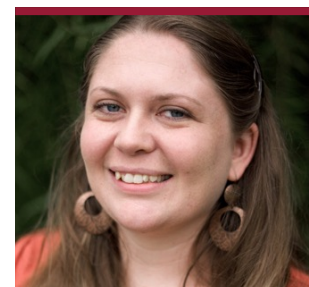
David Hopkins '91, President and Chief Executive Officer, Urban League of Greater Hartford, CT.

David Hopkins '91 is the President and Chief Executive Officer of the Urban League of Greater Hartford in Connecticut, whose mission is to create economic empowerment for Black Americans through education, employment, housing, health, and social justice. Passionate about culture, systems, and resources aligning to achieve operating excellence, David was also the CEO of the largest Community Health Center in Pittsburgh, PA, operated an independent strategic management consultancy, and was a Senior Vice President at PNC Bank in Public Finance and Community Development Banking. David earned a BA in Economics with a minor in sociology from Guilford College, in Greensboro, NC, an MBA from the University of Pennsylvania's Wharton School of Business in Information Management Systems, Strategies and Economics, and is currently a candidate for a Ph.D. in Community Engagement, Advocacy and Policy from Point Park University in Pittsburgh, PA. He is the co-vice chair of the Guilford Board of Trustees and president of the Josh Gibson Foundation Board of Directors, and co-chair of the University of Hartford's Community Advisory Council. David also serves on the Board of Metro Hartford Alliance, The Root Center for Advanced Recovery.



Dr Carin Combrinck, coordinator and lecturer in the Honours programme, Department of Architecture at the University of Pretoria.

Dr Carin Combrinck was the director of an architectural practice in Johannesburg for 15 years before joining the Department of Architecture at the University of Pretoria in 2010. She currently coordinates and lectures in the Honours programme while teaching third-year theory. She has been the study leader for selected M(Prof) students over the course of her academic career. Combrinck has engaged with communities living in the informal settlements of Slovo Park (Soweto, Johannesburg), Alaska (Mamelodi, Pretoria) as well as Plastic View (Moreleta Park, Pretoria). Proposals developed by students under her supervision have been presented to various Community Based and Non-Profit Organizations in pursuit of socio-spatial redress. Combrinck is the research field coordinator for Human Settlements and Urbanism. She completed her PhD in 2015 on the role of the architectural profession in the South African discourse on informal settlement upgrade. The social responsibility of architects in the emerging conditions of African urbanism underpins much of her research interest. Most particularly, methods of participation that contribute towards collaborative design practices are investigated as part of her studio module. Theoretical positions in support of an authentic dialogue between spatial design and the society it serves to provide the basis of further research endeavors.



Dayna Carr, Founder & Director, Glenwood Together.

Dayna Carr is a community development practitioner based in Greensboro, NC. For 18 years she has championed youth and family programs in the Glenwood neighborhood, including summer and after school programs, and the launch of a neighborhood-based private school. She has most recently launched Glenwood Together, a neighborhood community center that seeks to connect neighbors with opportunities to give, receive, and serve one another, strengthening the bonds of our community. She is an adjunct professor of global studies at North Carolina A&T State University and loves equipping young adults to consider their world through a lens of justice and community. She is a graduate of the Azusa Pacific University Seminary with a Master of Arts in Transformational Urban Leadership.



James Donovan, Director of Legislative Affairs, International Brotherhood of Teamsters.

James Donovan serves as the Director of the Department of Political and Legislative Action at the International Brotherhood of Teamsters since March of 2022. The Teamsters Union is the largest transportation union in North America representing 1.2 million working men and women. A Boston native, Jimmy is a proud 32-year Teamster working at UPS while attending college and graduate school. From 2013 to 2022, Jimmy served as the Political and Training Director at Teamsters Local 25 in Boston.



Kyle Farmbry, President, Guilford College

Kyle Farmbry began serving as the 10th President of Guilford College on Jan. 1, 2022. Previously, he served as a professor in the School of Public Affairs and Administration (SPAA) at Rutgers University-Newark. From August 2013 to July 2019, he was Dean of the Graduate School at Rutgers University-Newark. In 2017-18, Kyle served as an American Council on Education (ACE) Fellow. In this role he worked with the Vice-Chancellor (President) of the University of Pretoria in South Africa and examined university-based innovation and the implementation of the University of Pretoria - Mamelodi Campus' anchor institution strategy. Kyle has served as a Fulbright Fellow in South Africa (2009) and in Malta (2016). In May 2016 Kyle launched the United States-South African Higher Education Network, an effort aimed at building enhanced collaboration between higher education institutions in South Africa and the United States. In November 2017, he served as one of the founding members of the University Alliance for Refugees and at Risk Migrants, an effort which aims to engage universities and their communities in local and international advocacy efforts on behalf of refugees and at-risk migrants. Kyle's research and programmatic work has been supported by the Open Society Foundations, the South African Department of Higher Education and Training, the United States Fulbright Commission, and the United States Embassy in South Africa. Kyle is the author of *Administration and the Other: Explorations of Diversity and Marginalization in the Political Administrative State* (2009), *Crisis, Disaster, and Risk: Institutional Response and Emergence* (2012), *The War on Poverty: A Retrospective* (2014 - editor), and *Migration and Xenophobia: A Three Country Exploration* (2019). In November 2021, he was inducted as a Fellow of the National Academy of Public Administration. Kyle received his B.A., M.P.A., and Ph.D. degrees from The George Washington University. He completed his J.D. degree at the Rutgers University School of Law.



Russell Fugett, Founder and Chief Encouragement Officer, Jumla Network, and Co-founder and Executive Director of Endowment Commons.

Russell is founder and Chief Encouragement Officer of Jumla Network: a for profit strategic consultancy and knowledge network focused on diversity, equity, and inclusion. A 5th generation Black American entrepreneur, Russell is Co-Founder and Executive Director of Endowment Commons, a 501(c)(3) public charity creating an endowment that invests in funds and programs working to eliminate the racial wealth gap. A serial entrepreneur, Russell has founded startups, coached, advised, and consulted organizations across industries and business functions. An author, podcaster, and certified project management professional (PMP) Russell is a graduate of Trinity College, Hartford, CT, and The George Washington University School of Business where he earned a M.S. in Project Management. Russell resides in Crofton, MD with his wife Selah and daughters Paige and Natalie.



LaDaniel Gatling II, Vice President for Advancement and Alumni Relations, Guilford College.

LaDaniel "Danny" Gatling II, currently serves as the Vice President for Advancement and Alumni Relations at Guilford College in Greensboro, NC. Prior to Guilford, he served as the Vice President for Institutional Advancement at Bennett College where he worked closely with the President to support the mission of the College through the successful operation of a comprehensive fundraising program that focused on increasing major annual gifts and alumnae reach. Before joining Bennett, Danny served as the Director of Development for Constituent Programs at the University of North Carolina at Chapel Hill, Assistant Dean for Development at Elon University School of Law, Associate Vice President for Philanthropy at Guilford College, and the Director of Development for the School of Agriculture at North Carolina A&T State University. Danny earned a bachelor's degree in Architectural Engineering from North Carolina A&T State University and a master's degree in Philanthropic Studies from Indiana University. He is active in the Greensboro community and serves on the boards of Downtown Greensboro, Inc., the Greensboro Children's Museum, East Greensboro Now and Well Springs Retirement Community, Inc. He also serves on the alumni board for the Lilly Family School of Philanthropy at Indiana University.



Sarah Glover '88, Manager, Family Success Centers, United Way of Greater Greensboro.

Sarah Glover '88 helped design and now oversees United Way of Greater Greensboro's Family Success Centers, which launched in 2015 as the flagship initiative of an Integrated Service Delivery strategy to end local poverty. Family Success Centers coordinate services from multiple providers in one location for households with limited incomes and daunting barriers to financial stability and career success - such as the high cost of childcare, challenging health issues, justice system involvement, low educational attainment, or lack of transportation. The two-generation program model includes onsite childcare, GED classes, job readiness and money management classes, nurses and counselors, and a supportive coach for each family who stays with them for their whole journey, however long it takes. Prior to joining United Way in 2009, Sarah worked in research at Center for Creative Leadership, focusing on innovation, collaboration, and cross-cultural leadership. A proud graduate of Guilford College (1988) she completed a bachelor's degree in Psychology with a minor in French, as well as graduate coursework in nonprofit management at the University of North Carolina at Greensboro.



Maria Lopez Gonzalez, Policy Advocacy Manager, El Pueblo.

Maria Gonzalez is the Policy Advocacy Manager at El Pueblo where she helps plan and lead the civic engagement, electoral, and legislative campaigns focused on advancing and fighting for immigrant rights across the state. She's worked with coalitions at the national and state level on campaigns including advocating for a pathway to citizenship, heat protection standards for farmworkers, and in-state tuition for undocumented students.